



AE Sensors B.V.  
Jan Valsterweg 92  
3315 LG Dordrecht  
Tel.: +31 (0)78 6213152


# AE-H3-G“S”-type Loadcell

For Tension and Compression Loadcells



## Short description:

- Nickel plated Allow steel IP67 “S” type load cell.
- Tension and compression applications.
- Suitable for hanging, hopper and other weighing devices.
- Also available in imperial capacities and dimensions.

 test certificate no. D09-06.07  
C of C no R60/2000-CNI-06.02

 Certificate no. 06-099A1

## Available models:

Capacity	Full article description	Accuracy
50 kg	AE-H3G-C3-50kg-3B	C3
100 kg	AE-H3G-C3-100kg-3B	C3
250 kg	AE-H3G-C3-250kg-3B	C3
500 kg	AE-H3G-C3-500kg-3B	C3 Excluded from OIML
1 t	AE-H3G-C3-1t-3B	C3 Excluded from OIML
2,5 t	AE-H3G-C3-2,5t-6B	C3 Excluded from OIML
5 t	AE-H3G-C3-5t-6B	C3 Excluded from OIML
7,5 t	AE-H3G-C3-7,5t-6B	C3 Excluded from OIML

Specifications and dimensions are subject to change without notice and do not constitute any liability whatsoever.

[WWW.AESENSORS.NL](http://WWW.AESENSORS.NL)



**AE Sensors B.V.**  
 Jan Valsterweg 92  
 3315 LG Dordrecht  
 Tel.: +31 (0)78 6213152

# AE-H3-G“S”-type Loadcell

**For Tension and Compression Loadcells**

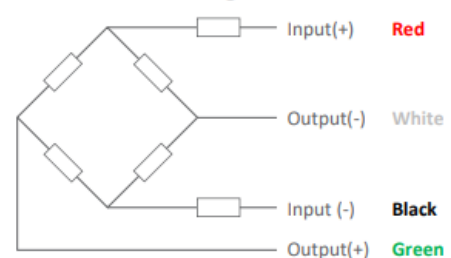
## Technical specifications:

Accuracy class		OIML R60 C3	C3
Output sensitivity ( = FS )	mV/V	3.0 ± 0.008	
Maximum capacity ( Emax )	t	0.05, 0.1, 0.25	0.5, 1, 2.5, 5, 7.5
Max. number of load cell intervals	$n_{LC}$	3000	
Ratio of min. LC verification interval	$Y = E_{max} / v_{min}$	15000	14000
Combined Error	%FS	≤± 0.020	
Creep Error (30 minutes)	%FS	≤± 0.016	
Temperature Effect on Zero (ZTC)	%FS/10°C	≤± 0.015	
Temperature Effect on Sensitivity (STC)	%FS/10°C	≤± 0.011	
Zero Balance	0%FS	≤± 1.0	
Safe Overload	%FS	150	
Ultimate Overload	%FS	300	
Maximum Deflection	mm	0.1935 ~ 0.4079	
Excitation, Recommended Voltage	V	5 ~ 12	
Excitation, Maximum Voltage	V	18	
Input resistance	Ω	430 ± 60	
Output resistance	Ω	351 ± 2.0	
Insulation resistance	MΩ	≥5000	
Compensated temperature	°C	-10 ~ +40	
Operating temperature	°C	-35 ~ +65	
Storage temperature	°C	-40 ~ +70	
Element material		Nickel plated alloy steel	
Ingress Protection (acc. to EN 60529)		IP67	
Recommended torque on fixation	Nm	M8:25	M12:75 M20:450 M24:750
ATEX classification (optional)		II1G Ex ia II1C T4	II1D Ex iaD 20 T73°C II3G Ex nL IIC T4

## Wiring:

- Shielded, 4 conductor cable, conductor AWG 22.
- Cable diameter: Ø 5mm.
- Standard cable length: 6m.
- Cable jacket: Polyurethane.
- Shield not connected to element.

4-Wire Connection Diagram



Specifications and dimensions are subject to change without notice and do not constitute any liability whatsoever.

**WWW.AESENSORS.NL**



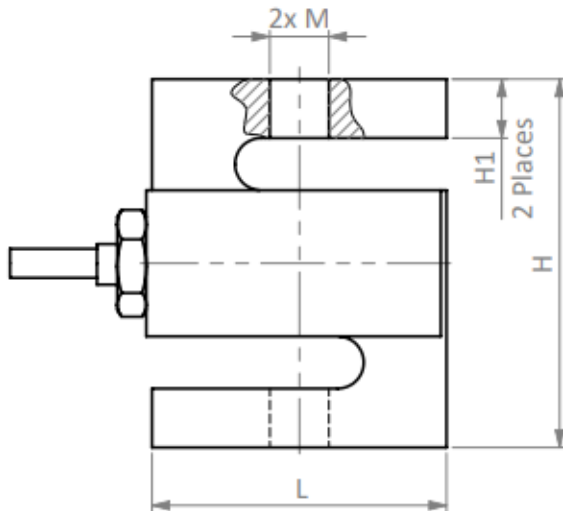
AE Sensors B.V.  
 Jan Valsterweg 92  
 3315 LG Dordrecht  
 Tel.: +31 (0)78 6213152

# AE-H3-G“S”-type Loadcell

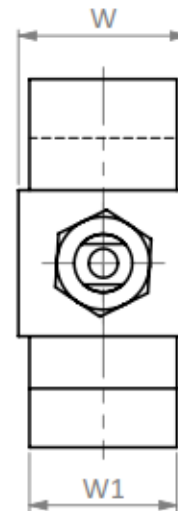
For Tension and Compression Loadcells

Dimensions in mm:

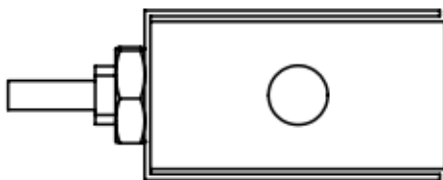
Side View



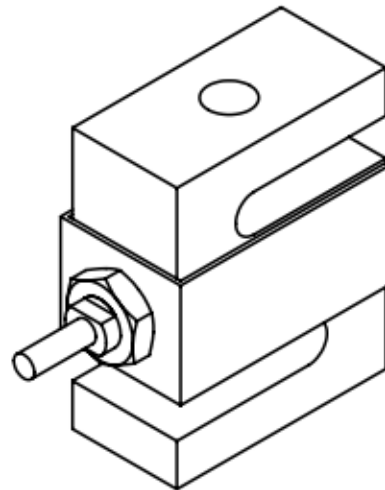
Back View



Top View



Isometric View



Dimension Capacity	L	H	W1	W	H1	M
50-100 kg	50,8	63,5	12,7	16,5	10,2	M8 x 1,25
250-500 kg	50,8	63,5	19,05	22,8	10,2	M12 x 1,75
1 t	50,8	63,5	25,4	29,2	10,2	M12 x 1,75
2,5 t	76,2	101,6	25,4	29,2	15,2	M20 x 1,5
5 t	76,2	101,6	25,4	29,2	20	M20 x 1,5
7,5 t	101,6	139,7	31,75	35,5	31	M24 x 2

Specifications and dimensions are subject to change without notice and do not constitute any liability whatsoever.

[WWW.AESENSORS.NL](http://WWW.AESENSORS.NL)


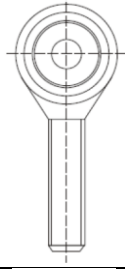
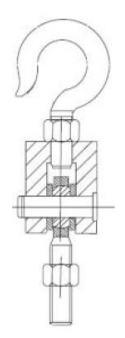
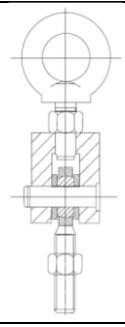
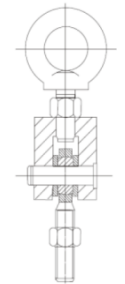


AE Sensors B.V.  
Jan Valsterweg 92  
3315 LG Dordrecht  
Tel.: +31 (0)78 6213152

# AE-H3-G“S”-type Loadcell

For Tension and Compression Loadcells

## Available accessories:

<p>AE-HL-3-001-25Kg-5t hook</p> <ul style="list-style-type: none"><li>• Alloy Steel</li><li>• Suitable for hybrid scales, cranes scales, packaging scales and hopper scales</li></ul>	
<p>AE-HL-3-002-25Kg-5t eye</p> <ul style="list-style-type: none"><li>• Alloy Steel</li><li>• Suitable for hybrid scales, cranes scales, packaging scales and hopper scales</li></ul>	
<p>AE-HL-3-003-25Kg-5t rod end</p> <ul style="list-style-type: none"><li>• Alloy Steel</li><li>• Suitable for hybrid scales, cranes scales, packaging scales and hopper scales and other electronic weighing devices.</li></ul>	
<p>AE-HL-3-004-25Kg-5t hook assembly</p> <ul style="list-style-type: none"><li>• Alloy Steel</li><li>• Suitable for hybrid scales, cranes scales, packaging scales and hopper scales and other electronic weighing devices.</li></ul>	
<p>AE-HL-3-005-25Kg-5t eye assembly</p> <ul style="list-style-type: none"><li>• Alloy Steel</li><li>• Suitable for hybrid scales, cranes scales, packaging scales and hopper scales and other electronic weighing devices.</li></ul>	

Specifications and dimensions are subject to change without notice and do not constitute any liability whatsoever.

[WWW.AESENSORS.NL](http://WWW.AESENSORS.NL)