




AE-H8c type Loadcell


For bending beam Loadcells



Short description:

- Nickel plated alloy steel IP67 shear beam load cell (100kg & 250kg are bending beam load cells)
- Adhesive sealed
- Suitable for platform weighing, bed weighing, etc.
- High accuracy.
- High reliability.
- Current calibrated (SC-option).

 Test certificate no. TC8012 Revision 1
C of C no R60/2000-NL1-12.12

 Certificate no. 12-028

Available models:

Capacity	Full article description	Accuracy
100 kg	AE-H8C-C3/C4/C5-100kg-4B(-SC-W6)	C3/C4/C5
250 kg	AE-H8C-C3/C4/C5-250kg-4B(-SC-W6)	C3/C4/C5
500 kg	AE-H8C-C3/C4/C5-500kg-4B(-SC-W6)	C3/C4/C5
750 kg	AE-H8C-C3/C4/C5-750kg-4B(-SC-W6)	C3/C4/C5
1 t	AE-H8C-C3/C4/C5-1.0t-4B(-SC-W6)	C3/C4/C5
1,5 t	AE-H8C-C3/C4/C5-1.5t-4B(-SC-W6)	C3/C4/C5
2 t	AE-H8C-C3/C4/C5-2.0t-4B(-SC-W6)	C3/C4/C5
2,5 t	AE-H8C-C3/C4/C5-2.5t-4B(-SC-W6)	C3/C4/C5
3 t	AE-H8C-C3/C4/C5-3.0t-4B(-SC-W6)	C3/C4/C5
5 t	AE-H8C-C3/C4/C5-5.0t-4B(-SC-W6)	C3/C4/C5
10 t	AE-H8C-C3/C4/C5-10.0t-4B(-SC-W6)	C3/C4/C5

Specifications and dimensions are subject to change without notice and do not constitute any liability whatsoever.

WWW.AESENSORS.NL



AE-H8c type Loadcell

For bending beam Loadcells

Detailed specifications:

Accuracy class		OIML R60 C3	OIML R60 C4	OIML R60 C5	
Output sensitivity (= FS)	mV/V	3.0 ± 0.003			
Maximum capacity (Emax)	t	0.1, 0.25, 0.5, 0.75, 1, 1.5, 2, 2.5, 3, 5, 10		0.1, 0.25, 0.5, 0.75, 1, 1.5, 2, 2.5	3, 5, 10
Max. number of load cell intervals	n _{LC}	3000	4000	5000	
Ratio of min. LC verification interval	Y = Emax / v _{min}	10000	15000	20000	18000
Combined Error	%FS	≤± 0.023	≤± 0.0175	≤± 0.014	
Creep Error (30 minutes)	of Emax	≤± 0.016	≤± 0.012	≤± 0.010	
Temperature Effect on Zero (ZTC)	of Emax	≤± 0.015	≤± 0.010	≤± 0.007	
Temperature Effect on Sensitivity (STC)	of Emax	≤± 0.011	≤± 0.009	≤± 0.008	
Zero balance	of FS	< ± 1.0 %			
Safe Overload	%FS	150			
Ultimate Overload	%FS	300			
Maximum Deflection	Mm	0.1t – 0.2t: 0.3	0.5t – 5t: ~ 1.2	10t: 0.8	
Excitation, Recommended Voltage	V	5 ~ 12			
Excitation, Maximum Voltage	V	18			
Input Resistance	Ω	350 ± 3.5			
Output Resistance	Ω	350 ± 3.5			
Insulation Resistance (50V)	MΩ	≥5000			
Compensated Temperature	°C	-10 ~ + 40			
Operating Temperature	°C	-35 ~ + 65			
Storage Temperature	°C	-40 ~ + 80			
Load Cell Weight	kg	0.1t – 2.0t: ~ 0.9	2.5t – 5t: ~ 1.7	10t: ~ 3.6	
Element Material		Nickel plated alloy steel			
Ingress Protection (acc. to EN 60529)		IP67			
Recommended Torque on Fixation Bolts	Nm	M12: 100 M18:200 M24:700			
ATEX Classification (optional)		II1G Ex ia II1C T4	II1D Ex iaD 20 T73°C	II3G nL IIC T4	

Wiring:

- Shielded, 4 or 6 conductor cable, conductor AWG 22
- Cable diameter: Ø 5mm.
- Standard cable length for 100kg – 2t: 4m and 6m for higher capacities.
- Shield not connected to element.

Specifications and dimensions are subject to change without notice and do not constitute any liability whatsoever.

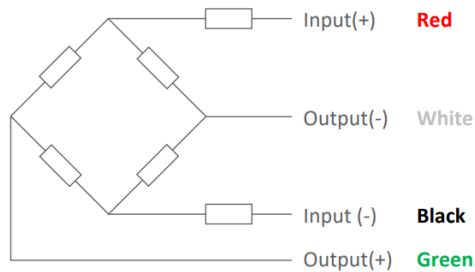
WWW.AESENSORS.NL



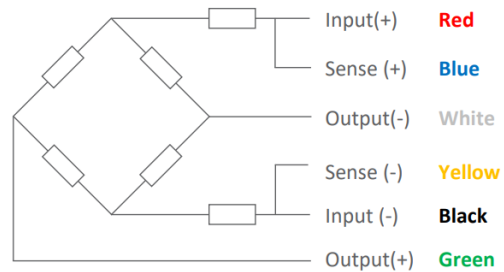
AE-H8c type Loadcell

For bending beam Loadcells

4-Wire Connection Diagram

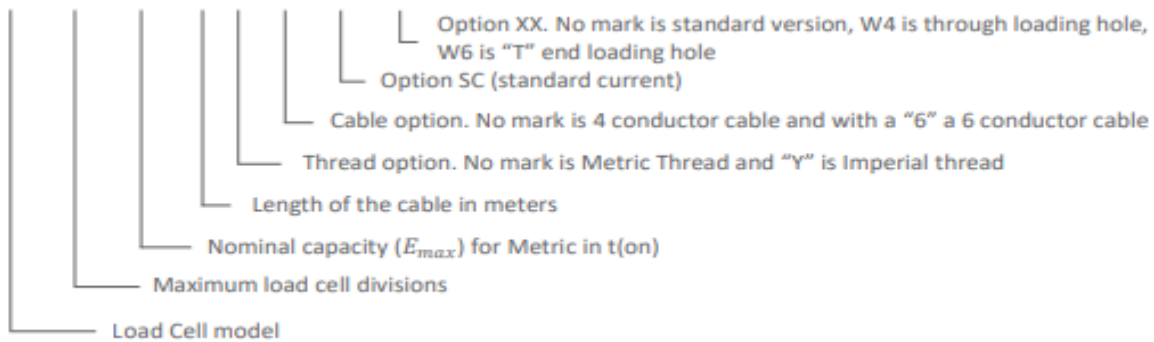


6-Wire Connection Diagram



Ordering Info:

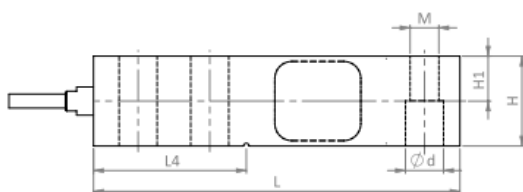
AEH8C – C3 – 1.0t – 4 – – BX – SC – XX



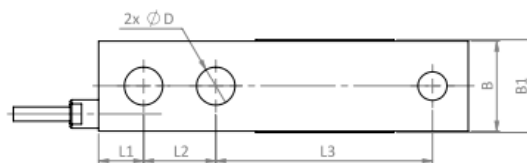
Dimensions in mm:

Standard Version

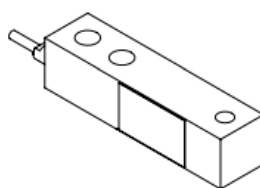
Side View



Top View



Isometric View

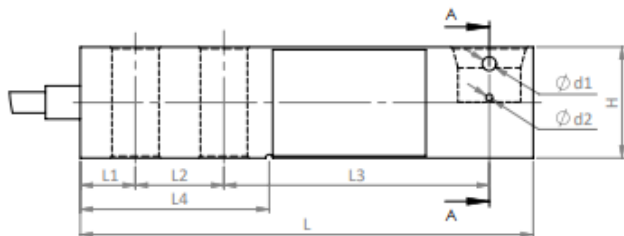


Specifications and dimensions are subject to change without notice and do not constitute any liability whatsoever.

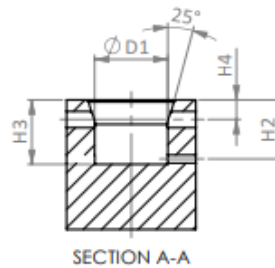
WWW.AESENSORS.NL

Option W6 version ("T" end loading hole)

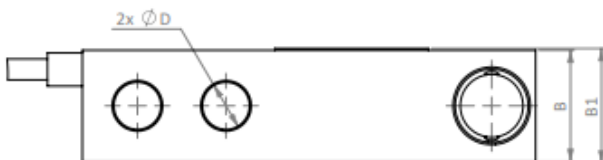
Side View



Front View




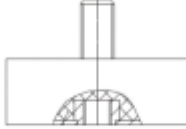

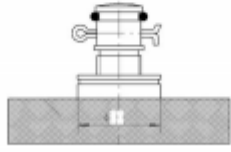
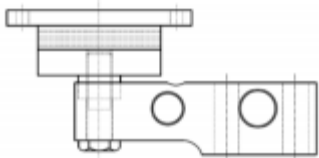

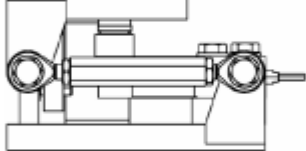

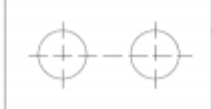
Top View



Capacity Dimension	100kg -250kg	0.5t-2t	2.5t-5t	10t
L	130	130	171.5	222.3
L1	15.8	15.8	19.1	25.4
L2	25.4	25.4	38.1	50.8
L3	76.2	76.2	95.3	120.7
L4	54.2	54.2	77.2	101.6
B	31.8	31.8	38.1	50.8
B1	37	34	40	52.4
H	31.8	31.8	38.1	50.8
H1	15.8	15.8	18.8	25.4
H2	14.5	14.5	17.5	-
H3	15.8	15.8	18.8	-
H4	4.8	4.8	4.8	-
ØD	13.5	13.5	19.8	26
ØD1	18	18	25	-
Ød1	4	4	4	-
Ød2	2	2	2	-
M	12 x 1.75	12 x 1.75	18 x 1.5	24 x 2

Specifications and dimensions are subject to change without notice and do not constitute any liability whatsoever.

Available accessories:

<p>HJ-8-201-0.1-10t foot</p> <ul style="list-style-type: none"> • \varnothing60-86mm and height 92-112 mm • Nickel plated alloy steel • Adjustable height 	
<p>HJ-8-203-0.1-2t foot</p> <ul style="list-style-type: none"> • \varnothing67mm and height 46 mm • Nickel plated alloy steel • Easy installation 	
<p>HJ-8-213-0.5-2t foot</p> <ul style="list-style-type: none"> • \varnothing60mm and height 62 mm • Nickel plated alloy steel • Adjustable height 	
<p>HJ-8-236-0.25-5t foot</p> <ul style="list-style-type: none"> • \varnothing80mm and height 50 mm • Nickel plated alloy steel • Adjustable mount • Easy installation 	
<p>Elastomer-0.5-10t</p> <ul style="list-style-type: none"> • Easy installation • Suitable for shock load 	
<p>HM-8-402-0.5-5t mount</p> <ul style="list-style-type: none"> • Nickel plated alloy steel • Adjustable mounting height • Easy installation 	
<p>HM-8-901-0.1t-2t/2.5t-5t mount</p> <ul style="list-style-type: none"> • Nickel plated alloy steel • Lift-off and horizontal movement protection • Easy installation, including load cell dummy 	
<p>HY-8-102-0.5-5t</p> <ul style="list-style-type: none"> • Nickel plated alloy steel • Easy installation • Good self-alignment ability 	
<p>HD-8-301-0.5-5t spacer plate</p> <ul style="list-style-type: none"> • Nickel plated alloy steel 	

Specifications and dimensions are subject to change without notice and do not constitute any liability whatsoever.