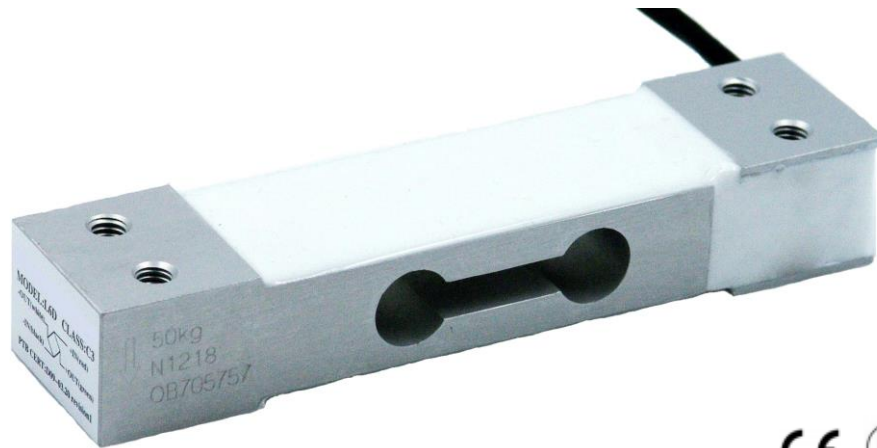




**AE Sensors B.V.**  
Jan Valsterweg 92  
3315 LG Dordrecht  
Tel.: +31 (0)78 6213152

# AE-L6-d type Loadcell

For Tension and Compression Loadcells



## Short description:

- Aluminium-alloy IP65 Single point load cell.
- Colorless anodized.
- Suitable for pricing scales, bench scales, etc.
- Maximum platform size: 250 x 350 mm.



Test certificate no. TC7868 Revision 1  
C of C no R60/2000-NL1-12.52  
Certificate no. 11-012

## Available models:

Capacity	Full article description	Accuracy
2.5 kg	AE-H3-G-C3/C4/C5-2.5kg-0.40B	C3 Excluded from OIML
3 kg	AE-H3-G-C3/C4/C5/C4-3kg-0.40B	C3/C4/C5
5 kg	AE-H3-G-C3/C4/C5/C4-5kg-0.40B	C3/C4/C5
6 kg	AE-H3-G-C3/C4/C5/C4-6kg-0.40B	C3/C4/C5
8 kg	AE-H3-G-C3/C4/C5/C4-8kg-0.40B	C3/C4/C5
10 kg	AE-H3-G-C3/C4/C5/C4-10kg-0.40B	C3/C4/C5
15 kg	AE-H3-G-C3/C4/C5-15kg-0.40B	C3/C4/C5
20 kg	AE-H3-G-C3/C4/C5-20kg-0.40B	C3/C4/C5
30 kg	AE-H3-G-C3/C4/C5-30kg-0.40B	C3/C4/C5
35 kg	AE-H3-G-C3/C4/C5/C4-35kg-0.40B	C3/C4/C5
40 kg	AE-H3-G-C3/C4/C5/C4-40kg-0.40B	C3/C4/C5
50 kg	AE-H3-G-C3/C4/C5-50kg-0.40B	C3/C4/C5

Specifications and dimensions are subject to change without notice and do not constitute any liability whatsoever.

[WWW.AESENSORS.NL](http://WWW.AESENSORS.NL)



**AE Sensors B.V.**  
Jan Valsterweg 92  
3315 LG Dordrecht  
Tel.: +31 (0)78 6213152

# AE-L6-d type Loadcell

For Tension and Compression Loadcells

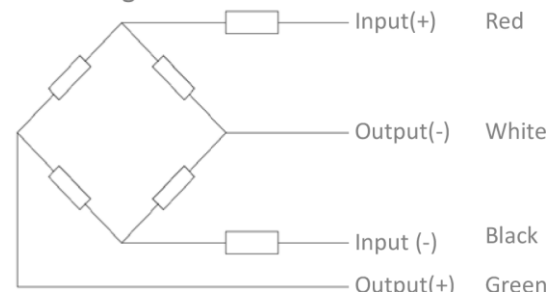
## Technical specifications:

Accuracy class		C3	OIML R60 C3	OIML R60 C4	OIML R60 C5
Output sensitivity ( = FS )	mV/V	1.8 ± 0.2	2.0 ± 0.2		
Maximum capacity ( Emax )	t	2.5	3, 5, 6, 8, 10, 15, 20, 30, 25, 40, 50		
Max. number of load cell intervals	n <sub>LC</sub>	3000	3000	4000	5000
Ratio of min. LC verification interval	Y = Emax / v <sub>min</sub>	7000	10000	15000	20000
Combined Error	%FS	≤± 0.0230		≤± 0.0175	≤± 0.0140
Minimum dead load	of Emax	0%			
Safe overload	of Emax	150 %			
Ultimate overload	of Emax	300 %			
Zero balance	of FS	< ± 2.0 %			
Excitation, recommended voltage	V	5 ~ 12			
Excitation maximum	V	18			
Input resistance	Ω	409 ± 6			
Output resistance	Ω	350 ± 3			
Insulation resistance	MΩ	≥5000 ( at 50VDC )			
Compensated temperature	°C	-10 ~ +40			
Operating temperature	°C	-35 ~ +65			
Storage temperature	°C	-40 ~ +70			
Element material		Aluminium			
Ingress Protection (acc. to EN 60529)		IP65			
Recommended torque on fixation	Nm	< 30kg: 6		> 30kg: 10	

## Wiring:

- Shielded, 4 conductor cable.
- Cable diameter: Ø 3.8mm.
- Standard cable length for: 0.40m.
- Shield not connected to element.
- Cable jacket in PVC.

4-wire diagram



Specifications and dimensions are subject to change without notice and do not constitute any liability whatsoever.

[WWW.AESENSORS.NL](http://WWW.AESENSORS.NL)

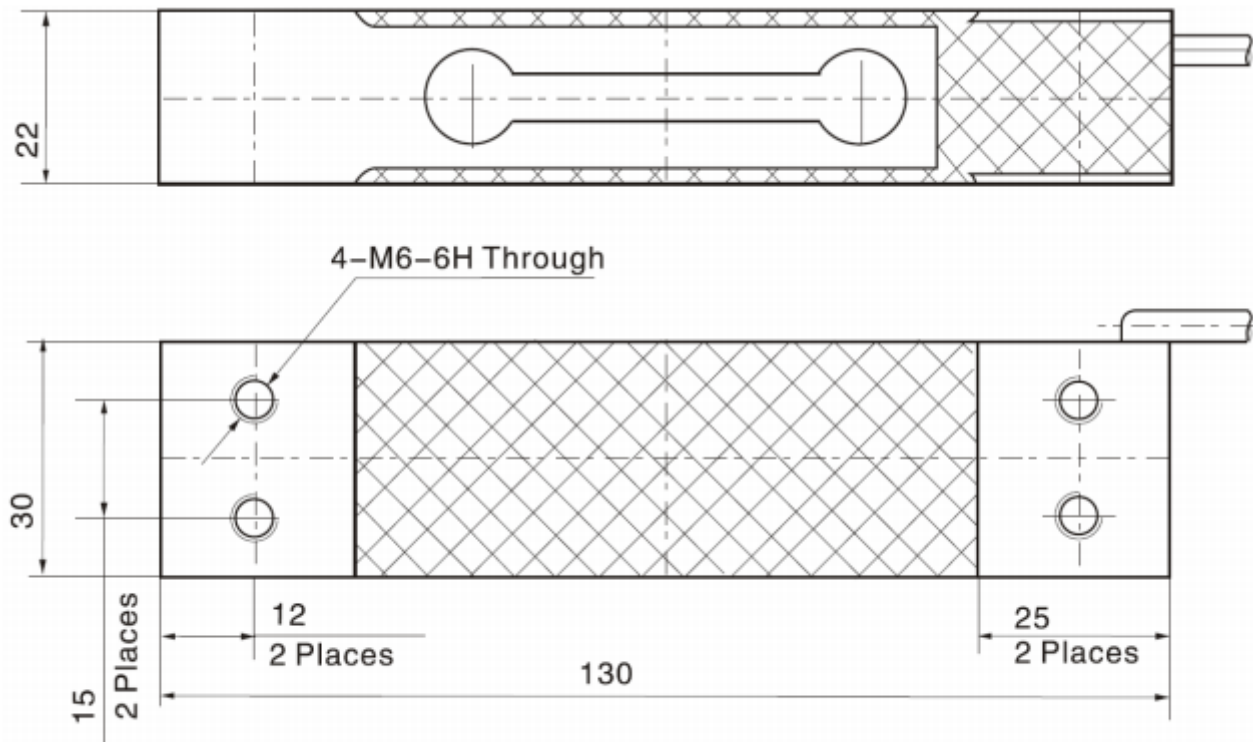


AE Sensors B.V.  
Jan Valsterweg 92  
3315 LG Dordrecht  
Tel.: +31 (0)78 6213152

# AE-L6-d type Loadcell

For Tension and Compression Loadcells

## Dimensions in mm:



Note: Screws M6 class 8.8, screw rinsed with oil. Torque as in specifications table

Specifications and dimensions are subject to change without notice and do not constitute any liability whatsoever.

[WWW.AESENSORS.NL](http://WWW.AESENSORS.NL)